

All classes run from 8-10 pm ET (5-7 pm PT)

Details on the dates and times of each class are available upon login to your course.

AUD

- Track 1 February 23 — March 30
- Track 2 May 4 — June 8
- Track 3 August 24 — September 28
- Track 4 November 2 — December 14

BEC

- Track 1 February 21 — March 28
- Track 2 May 2 — June 26
- Track 3 August 22 — September 26
- Track 4 November 7 — December 12

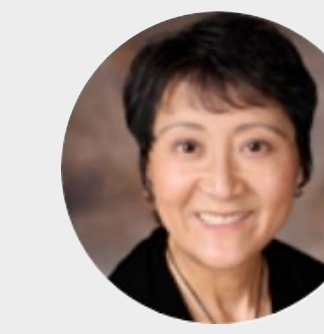
FAR

- Track 1 January 18 — March 29
- Track 2 April 5 — June 28
- Track 3 July 19 — September 27
- Track 4 October 11 — December 20

REG

- Track 1 January 27 — March 31
- Track 2 April 7 — June 9
- Track 3 July 28 — September 29
- Track 4 October 20 — January 5

AUD Track 1



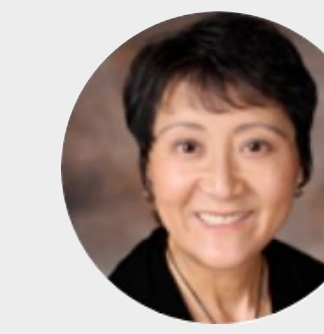
Jeanne Yamamura, PhD, CPA, MIM

Wednesdays, February 23 — March 30

All classes run from 8-10 pm ET (5-7 pm PT)

Wednesday, February 23, 2022	Introduction to the AUD Section	Jeanne Yamamura
Wednesday, March 2, 2022	Modules 1 and 2: Professional Ethics – Parts 1 and 2	Jeanne Yamamura
Wednesday, March 9, 2022	Modules 3 and 4: Planning and Internal Control	Jeanne Yamamura
Wednesday, March 16, 2022	Module 5 and 6: Substantive Evidence Collection	Jeanne Yamamura
Wednesday, March 23, 2022	Modules 7 and 8: Sampling and IT Auditing and Reporting	Jeanne Yamamura
Wednesday, March 30, 2022	Modules 9 and 10: Other Reports and Other Professional Services	Jeanne Yamamura

AUD Track 2



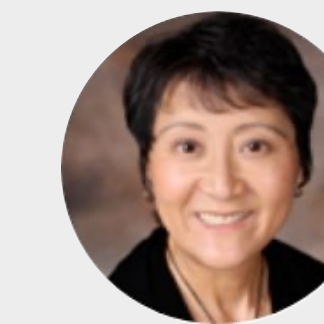
Jeanne Yamamura, PhD, CPA, MIM

Wednesdays, May 4 — June 8

All classes run from 8-10 pm ET (5-7 pm PT)

Wednesday, May 4, 2022	Introduction to the AUD Section	Jeanne Yamamura
Wednesday, May 11, 2022	Modules 1 and 2: Professional Ethics – Parts 1 and 2	Jeanne Yamamura
Wednesday, May 18, 2022	Modules 3 and 4: Planning and Internal Control	Jeanne Yamamura
Wednesday, May 25, 2021	Module 5 and 6: Substantive Evidence Collection	Jeanne Yamamura
Wednesday, June 1, 2022	Modules 7 and 8: Sampling and IT Auditing and Reporting	Jeanne Yamamura
Wednesday, June 8, 2022	Modules 9 and 10: Other Reports and Other Professional Services	Jeanne Yamamura

AUD Track 3



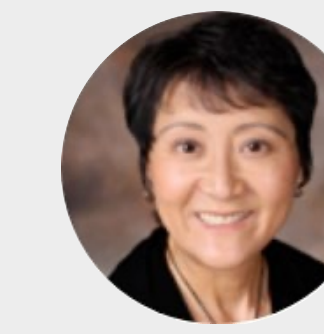
Jeanne Yamamura, PhD, CPA, MIM

Wednesdays, August 24 — September 28

All classes run from 8-10 pm ET (5-7 pm PT)

Wednesday, August 24, 2022	Introduction to the AUD Section	Jeanne Yamamura
Wednesday, August 31, 2022	Modules 1 and 2: Professional Ethics – Parts 1 and 2	Jeanne Yamamura
Wednesday, September 7, 2022	Modules 3 and 4: Planning and Internal Control	Jeanne Yamamura
Wednesday, September 14, 2022	Module 5 and 6: Substantive Evidence Collection	Jeanne Yamamura
Wednesday, September 21, 2022	Modules 7 and 8: Sampling and IT Auditing and Reporting	Jeanne Yamamura
Wednesday, September 28, 2022	Modules 9 and 10: Other Reports and Other Professional Services	Jeanne Yamamura

AUD Track 4



Jeanne Yamamura, PhD, CPA, MIM

November 2 — December 14

All classes run from 8-10 pm ET (5-7 pm PT)

Wednesday, November 2, 2022	Introduction to the AUD Section	Jeanne Yamamura
Wednesday, November 9, 2022	Modules 1 and 2: Professional Ethics – Parts 1 and 2	Jeanne Yamamura
Wednesday, November 16, 2022	Modules 3 and 4: Planning and Internal Control	Jeanne Yamamura
Wednesday, November 30, 2022	Module 5 and 6: Substantive Evidence Collection	Jeanne Yamamura
Wednesday, December 7, 2022	Modules 7 and 8: Sampling and IT Auditing and Reporting	Jeanne Yamamura
Wednesday, December 14, 2022	Modules 9 and 10: Other Reports and Other Professional Services	Jeanne Yamamura

BEC Track 1



Daniel Gibbons,
MS, MAS, CPA



Janet Gillespie,
CPA

Mondays, February 21 — March 28

All classes run from 8-10 pm ET (5-7 pm PT)

Monday, February 21, 2022	Introduction to the BEC Section and Module 1	Janet Gillespie and Dan Gibbons
Monday, February 28, 2022	Module 1 Review and Modules 2-4 Introduction	Janet Gillespie and Dan Gibbons
Monday, March 7, 2022	Modules 2-4 Review and Modules 5-6 Introduction	Dan Gibbons
Monday, March 14, 2022	Modules 5-6 Review and Modules 7-8 Introduction	Janet Gillespie and Dan Gibbons
Monday, March 21, 2022	Modules 7-8 Review and Modules 9-10 Introduction	Janet Gillespie
Monday, March 28, 2022	Modules 9-10 Review	Janet Gillespie

BEC Track 2



Daniel Gibbons,
MS, MAS, CPA



Janet Gillespie,
CPA

May 2 — June 26

All classes run from 8-10 pm ET (5-7 pm PT)

Monday, May 2, 2022	Introduction to the BEC Section and Module 1	Janet Gillespie and Dan Gibbons
Monday, May 9, 2022	Module 1 Review and Modules 2-4 Introduction	Janet Gillespie and Dan Gibbons
Monday, May 16, 2022	Modules 2-4 Review and Modules 5-6 Introduction	Dan Gibbons
Monday, May 23, 2022	Modules 5-6 Review and Modules 7-8 Introduction	Janet Gillespie and Dan Gibbons
Wednesday, June 1, 2022	Modules 7-8 Review and Modules 9-10 Introduction	Janet Gillespie
Monday, June 6, 2022	Modules 9-10 Review	Janet Gillespie

BEC Track 3



Daniel Gibbons,
MS, MAS, CPA



Janet Gillespie,
CPA

August 22 — September 26

All classes run from 8-10 pm ET (5-7 pm PT)

Monday, August 22, 2022	Introduction to the BEC Section and Module 1	Janet Gillespie and Dan Gibbons
Monday, August 29, 2022	Module 1 Review and Modules 2-4 Introduction	Janet Gillespie and Dan Gibbons
Wednesday, September 7, 2022	Modules 2-4 Review and Modules 5-6 Introduction	Dan Gibbons
Monday, September 12, 2022	Modules 5-6 Review and Modules 7-8 Introduction	Janet Gillespie and Dan Gibbons
Monday, September 19, 2022	Modules 7-8 Review and Modules 9-10 Introduction	Janet Gillespie
Monday, September 26, 2022	Modules 9-10 Review	Janet Gillespie

BEC Track 4



Daniel Gibbons,
MS, MAS, CPA



Janet Gillespie,
CPA

Mondays, November 7 — December 12

All classes run from 8-10 pm ET (5-7 pm PT)

Monday, November 7, 2022	Introduction to the BEC Section and Module 1	Janet Gillespie and Dan Gibbons
Monday, November 14, 2022	Module 1 Review and Modules 2-4 Introduction	Janet Gillespie and Dan Gibbons
Monday, November 21, 2022	Modules 2-4 Review and Modules 5-6 Introduction	Dan Gibbons
Monday, November 28, 2022	Modules 5-6 Review and Modules 7-8 Introduction	Janet Gillespie and Dan Gibbons
Monday, December 5, 2022	Modules 7-8 Review and Modules 9-10 Introduction	Janet Gillespie
Monday, December 12, 2022	Modules 9-10 Review	Janet Gillespie

FAR Track 1



Meghann Cefaratti,
PhD



Janet Gillespie,
CPA

January 18 — March 29

All classes run from 8-10 pm ET (5-7 pm PT)

Tuesday, January 18, 2022	Introduction to the FAR Exam and Module 1	Meghann Cefaratti
Tuesday, January 25, 2022	Module 1 Review and Introduction to Module 2	Meghann Cefaratti
Tuesday, February 1, 2022	Module 2 Review and Introduction to Module 3	Meghann Cefaratti
Tuesday, February 8, 2022	Module 3 Review and Introduction to Module 4	Meghann Cefaratti
Tuesday, February 15, 2022	Module 4 Review and Introduction to Module 5	Meghann Cefaratti
Tuesday, February 22, 2022	Module 5 Review and Introduction to Module 6	Meghann Cefaratti
Tuesday, March 1, 2022	Module 6 Review and Introduction to Module 7	Meghann Cefaratti
Tuesday, March 8, 2022	Module 7 Review and Introduction to Module 8	Meghann Cefaratti
Tuesday, March 15, 2022	Module 8 Review and Introduction to Module 9	Meghann Cefaratti
Tuesday, March 22, 2022	Module 9 Review and Introduction to Module 10	Meghann Cefaratti & Janet Gillespie
Tuesday, March 29, 2022	Module 10 Review	Janet Gillespie

FAR Track 2



Meghann Cefaratti,
PhD



Janet Gillespie,
CPA

Tuesdays, April 5 — June 28

All classes run from 8-10 pm ET (5-7 pm PT)

Tuesday, April 5, 2022	Introduction to the FAR Exam and Module 1	Meghann Cefaratti
Tuesday, April 12, 2022	Module 1 Review and Introduction to Module 2	Meghann Cefaratti
Tuesday, April 19, 2022	Module 2 Review and Introduction to Module 3	Meghann Cefaratti
Tuesday, April 26, 2022	Module 3 Review and Introduction to Module 4	Meghann Cefaratti
Tuesday, May 3, 2022	Module 4 Review and Introduction to Module 5	Meghann Cefaratti
Tuesday, May 10, 2022	Module 5 Review and Introduction to Module 6	Meghann Cefaratti
Tuesday, May 17, 2022	Module 6 Review and Introduction to Module 7	Meghann Cefaratti
Tuesday, May 24, 2022	Module 7 Review and Introduction to Module 8	Meghann Cefaratti
Tuesday, May 31, 2022	Module 8 Review and Introduction to Module 9	Meghann Cefaratti
Tuesday, June 7, 2022	Module 9 Review and Introduction to Module 10	Meghann Cefaratti & Janet Gillespie
Tuesday, June 28, 2022	Module 10 Review	Janet Gillespie

FAR Track 3



Meghann Cefaratti,
PhD



Janet Gillespie,
CPA

Tuesdays, July 19 — September 27

All classes run from 8-10 pm ET (5-7 pm PT)

Tuesday, July 19, 2022	Introduction to the FAR Exam and Module 1	Meghann Cefaratti
Tuesday, July 26, 2022	Module 1 Review and Introduction to Module 2	Meghann Cefaratti
Tuesday, August 2, 2022	Module 2 Review and Introduction to Module 3	Meghann Cefaratti
Tuesday, August 9, 2022	Module 3 Review and Introduction to Module 4	Meghann Cefaratti
Tuesday, August 16, 2022	Module 4 Review and Introduction to Module 5	Meghann Cefaratti
Tuesday, August 23, 2022	Module 5 Review and Introduction to Module 6	Meghann Cefaratti
Tuesday, August 30, 2022	Module 6 Review and Introduction to Module 7	Meghann Cefaratti
Tuesday, September 6, 2022	Module 7 Review and Introduction to Module 8	Meghann Cefaratti
Tuesday, September 13, 2022	Module 8 Review and Introduction to Module 9	Meghann Cefaratti
Tuesday, September 20, 2022	Module 9 Review and Introduction to Module 10	Meghann Cefaratti & Janet Gillespie
Tuesday, September 27, 2022	Module 10 Review	Janet Gillespie

FAR Track 4



Meghann Cefaratti,
PhD



Janet Gillespie,
CPA

Tuesdays, October 11 — December 20

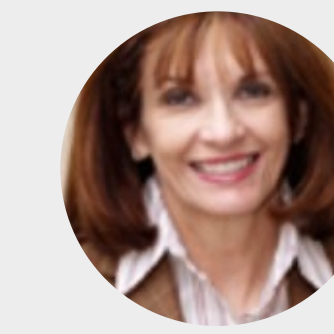
All classes run from 8-10 pm ET (5-7 pm PT)

Tuesday, October 11, 2022	Introduction to the FAR Exam and Module 1	Meghann Cefaratti
Tuesday, October 18, 2022	Module 1 Review and Introduction to Module 2	Meghann Cefaratti
Tuesday, October 25, 2022	Module 2 Review and Introduction to Module 3	Meghann Cefaratti
Tuesday, November 1, 2022	Module 3 Review and Introduction to Module 4	Meghann Cefaratti
Tuesday, November 8, 2022	Module 4 Review and Introduction to Module 5	Meghann Cefaratti
Tuesday, November 15, 2022	Module 5 Review and Introduction to Module 6	Meghann Cefaratti
Tuesday, November 22, 2022	Module 6 Review and Introduction to Module 7	Meghann Cefaratti
Tuesday, November 29, 2022	Module 7 Review and Introduction to Module 8	Meghann Cefaratti
Tuesday, December 6, 2022	Module 8 Review and Introduction to Module 9	Meghann Cefaratti
Tuesday, December 13, 2022	Module 9 Review and Introduction to Module 10	Meghann Cefaratti & Janet Gillespie
Tuesday, December 20, 2022	Module 10 Review	Janet Gillespie

REG Track 1



Suzanne Youngberg,
MST, CPA



Marianne Jennings,
JD

Thursdays, January 27 — March 31

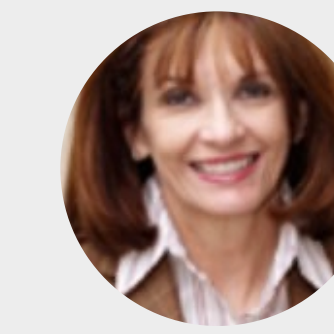
All classes run from 8-10 pm ET (5-7 pm PT)

Thursday, January 27, 2022	Introduction to the Regulation Exam and Module 1	Suzanne Youngberg
Thursday, February 3, 2022	Module 2	Marianne Jennings
Thursday, February 10, 2022	Module 3	Marianne Jennings
Thursday, February 17, 2022	Module 4	Marianne Jennings
Thursday, February 24, 2022	Module 5 & 6	Suzanne Youngberg
Thursday, March 3, 2022	Module 7	Suzanne Youngberg
Thursday, March 10, 2022	Module 8	Suzanne Youngberg
Thursday, March 17, 2022	Module 9	Suzanne Youngberg
Thursday, March 24, 2022	Module 10	Suzanne Youngberg
Thursday, March 31, 2022	Conclusion	Suzanne Youngberg

REG Track 2



Suzanne Youngberg,
MST, CPA



Marianne Jennings,
JD

Thursdays, April 7— June 9

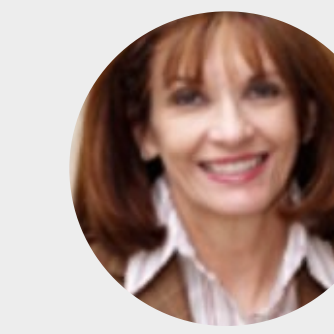
All classes run from 8-10 pm ET (5-7 pm PT)

Thursday, April 7, 2022	Introduction to the Regulation Exam and Module 1	Suzanne Youngberg
Thursday, April 14, 2022	Module 2	Marianne Jennings
Thursday April 21, 2022	Module 3	Marianne Jennings
Thursday, April 28, 2022	Module 4	Marianne Jennings
Thursday, May 5, 2022	Module 5 & 6	Suzanne Youngberg
Thursday, May 12, 2022	Module 7	Suzanne Youngberg
Thursday, May 19, 2022	Module 8	Suzanne Youngberg
Thursday, May 26, 2022	Module 9	Suzanne Youngberg
Thursday, June 2, 2022	Module 10	Suzanne Youngberg
Thursday, June 9, 2022	Conclusion	Suzanne Youngberg

REG Track 3



Suzanne Youngberg,
MST, CPA



Marianne Jennings,
JD

Thursdays, July 28 — September 29

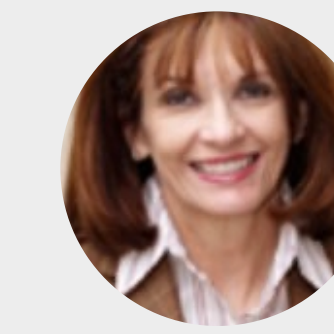
All classes run from 8-10 pm ET (5-7 pm PT)

Thursday, July 28, 2022	Introduction to the Regulation Exam and Module 1	Suzanne Youngberg
Thursday, August 4, 2022	Module 2	Marianne Jennings
Thursday, August 11, 2022	Module 3	Marianne Jennings
Thursday, August 18, 2022	Module 4	Marianne Jennings
Thursday, August 25, 2022	Module 5 & 6	Suzanne Youngberg
Thursday, September 1, 2022	Module 7	Suzanne Youngberg
Thursday, September 8, 2022	Module 8	Suzanne Youngberg
Thursday, September 15, 2022	Module 9	Suzanne Youngberg
Wednesday, September 21, 2022	Module 10	Suzanne Youngberg
Thursday, September 29, 2022	Conclusion	Suzanne Youngberg

REG Track 4



Suzanne Youngberg,
MST, CPA



Marianne Jennings,
JD

Thursdays, October 20 — January 5, 2022

All classes run from 8-10 pm ET (5-7 pm PT)

Thursday, October 20, 2022	Introduction to the Regulation Exam and Module 1	Suzanne Youngberg
Thursday, October 27, 2022	Module 2	Marianne Jennings
Thursday, November 3, 2022	Module 3	Marianne Jennings
Thursday, November 10, 2022	Module 4	Marianne Jennings
Thursday, November 17, 2022	Module 5 & 6	Suzanne Youngberg
Tuesday, November 22, 2022	Module 7	Suzanne Youngberg
Thursday, December 1, 2022	Module 8	Suzanne Youngberg
Thursday, December 8, 2022	Module 9	Suzanne Youngberg
Thursday, December 15, 2022	Module 10	Suzanne Youngberg
Thursday, January 5, 2023	Conclusion	Suzanne Youngberg

January 2022

SUNDAY	MONDAY	TUESDAY	WEDNESDAY	THURSDAY	FRIDAY	SATURDAY
26	27	28	29	30	31	1
2	3	4	5	6	7	8
9	10	11	12	13	14	15
16	17	FAR	18	19	20	21
23	24	FAR	25	26	REG	27
30	31	1	2	REG	3	4
						5

February 2022

SUNDAY	MONDAY	TUESDAY	WEDNESDAY	THURSDAY	FRIDAY	SATURDAY
30	31	FAR	2	REG	4	5
6	7	FAR	9	REG	11	12
13	14	FAR	16	REG	18	19
20	BEC	FAR	AUD	REG	25	26
27	BEC	FAR	AUD	REG	4	5

Class dates and times are subject to change. Log in to your Virtual Classroom at efficientlearning.com/login for the latest announcements.

March 2022

SUNDAY	MONDAY	TUESDAY	WEDNESDAY	THURSDAY	FRIDAY	SATURDAY
		FAR	AUD	REG		
27	28	1	2	3	4	5
	BEC	FAR	AUD	REG		
6	7	8	9	10	11	12
	BEC	FAR	AUD	REG		
13	14	15	16	17	18	19
	BEC	FAR	AUD	REG		
20	21	22	23	24	25	26
	BEC	FAR	AUD	REG		
27	28	29	30	31	1	2

April 2022

SUNDAY	MONDAY	TUESDAY	WEDNESDAY	THURSDAY	FRIDAY	SATURDAY
		FAR		REG		
27	28	29	30	31	1	2
		FAR		REG		
3	4	5	6	7	8	9
		FAR		REG		
10	11	12	13	14	15	16
		FAR		REG		
17	18	19	20	21	22	23
		FAR		REG		
24	25	26	27	28	29	30

May 2022

SUNDAY	MONDAY	TUESDAY	WEDNESDAY	THURSDAY	FRIDAY	SATURDAY
	BEC	FAR	AUD	REG		
1	2	3	4	5	6	7
	BEC	FAR	AUD	REG		
8	9	10	11	12	13	14
	BEC	FAR	AUD	REG		
15	16	17	18	19	20	21
	BEC	FAR	AUD	REG		
22	23	24	25	26	27	28
		FAR	BEC	REG		
			AUD			
29	30	31	1	2	3	4

June 2022

SUNDAY	MONDAY	TUESDAY	WEDNESDAY	THURSDAY	FRIDAY	SATURDAY
			BEC AUD	REG		
29	30	31	1	2	3	4
	BEC	FAR	AUD	REG		
5	6	7	8	9	10	11
12	13	14	15	16	17	18
19	20	21	22	23	24	25
		FAR				
26	27	28	29	30	1	2

July 2022

SUNDAY	MONDAY	TUESDAY	WEDNESDAY	THURSDAY	FRIDAY	SATURDAY		
26	27	28	29	30	1	2		
3	4	5	6	7	8	9		
10	11	12	13	14	15	16		
17	18	FAR	19	20	21	22	23	
24	25	FAR	26	27	REG	28	29	30
31	1	2	3	REG	4	5	6	

August 2022

SUNDAY	MONDAY	TUESDAY	WEDNESDAY	THURSDAY	FRIDAY	SATURDAY
31	1	FAR	3	REG	5	6
7	8	FAR	10	REG	12	13
14	15	FAR	17	REG	19	20
21	BEC	FAR	AUD	REG	26	27
28	BEC	FAR	AUD	REG	2	3

Class dates and times are subject to change. Log in to your Virtual Classroom at efficientlearning.com/login for the latest announcements.

September 2022

SUNDAY	MONDAY	TUESDAY	WEDNESDAY	THURSDAY	FRIDAY	SATURDAY
	BEC	FAR		REG		
28	29	30	31	1	2	3
		FAR	AUD	REG		
4	5	6	7	8	9	10
	BEC	FAR	AUD	REG		
11	12	13	14	15	16	17
	BEC	FAR	AUD	REG		
18	19	20	21	22	23	24
	BEC	FAR	AUD	REG		
25	26	27	28	29	30	1

Class dates and times are subject to change. Log in to your Virtual Classroom at efficientlearning.com/login for the latest announcements.

October 2022

SUNDAY	MONDAY	TUESDAY	WEDNESDAY	THURSDAY	FRIDAY	SATURDAY
		FAR		REG		
25	26	27	28	29	30	1
2	3	4	5	6	7	8
		FAR				
9	10	11	12	13	14	15
		FAR		REG		
16	17	18	19	20	21	22
		FAR		REG		
23	24	25	26	27	28	29
		FAR		REG		
30	31	1	2	3	4	5

Class dates and times are subject to change. Log in to your Virtual Classroom at efficientlearning.com/login for the latest announcements.

November 2022

SUNDAY	MONDAY	TUESDAY	WEDNESDAY	THURSDAY	FRIDAY	SATURDAY
		FAR	AUD	REG		
30	31	1	2	3	4	5
	BEC	FAR	AUD	REG		
6	7	8	9	10	11	12
	BEC	FAR	AUD	REG		
13	14	15	16	17	18	19
	BEC	FAR				
20	21	REG	23	24	25	26
	BEC	FAR	AUD	REG		
27	28	29	30	1	2	3

December 2022

SUNDAY	MONDAY	TUESDAY	WEDNESDAY	THURSDAY	FRIDAY	SATURDAY
		FAR		REG		
27	28	29	30	1	2	3
	BEC	FAR	AUD	REG		
4	5	6	7	8	9	10
	BEC	FAR	AUD	REG		
11	12	13	14	15	16	17
		FAR				
18	19	20	21	22	23	24
25	26	27	28	29	30	31

January 2023

SUNDAY	MONDAY	TUESDAY	WEDNESDAY	THURSDAY	FRIDAY	SATURDAY
				REG		
1	2	3	4	5	6	7
8	9	10	11	12	13	14
15	16	17	18	19	20	21
	BEC		AUD			
22	23	24	25	26	27	28
	BEC					
29	30	31	1	2	3	4