

All classes run from 8-10 pm ET (5-7 pm PT)

Details on the dates and times of each class are available upon login to your course.

AUD

- Track 1 February 24 — March 31
- Track 2 May 26 — June 30
- Track 3 August 25 — September 29
- Track 4 November 3 — December 15

BEC

- Track 1 February 22 — March 29
- Track 2 May 24 — June 28
- Track 3 September 13 — October 18
- Track 4 November 8 — December 13

FAR

- Track 1 January 19 — March 30
- Track 2 April 13 — June 22
- Track 3 July 20 — September 28
- Track 4 October 12 — December 21

REG

- Track 1 January 28 — April 1
- Track 2 April 29 — July 1
- Track 3 July 29 — September 30
- Track 4 October 21 — January 6, 2022

AUD Track 1



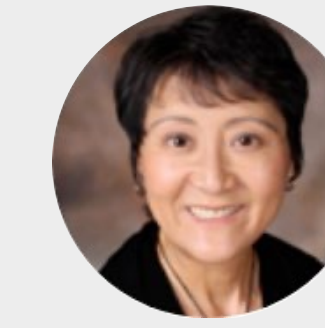
Jeanne Yamamura, PhD, CPA, MIM

Wednesdays, February 24 — March 31

All classes run from 8-10 pm ET (5-7 pm PT)

Wednesday, February 24	Introduction to the AUD Section	Jeanne Yamamura
Wednesday, March 3	Modules 1 and 2: Professional Ethics – Parts 1 and 2	Jeanne Yamamura
Wednesday, March 10	Modules 3 and 4: Planning and Internal Control	Jeanne Yamamura
Wednesday, March 17	Module 5 and 6: Substantive Evidence Collection	Jeanne Yamamura
Wednesday, March 24	Modules 7 and 8: Sampling and IT Auditing and Reporting	Jeanne Yamamura
Wednesday, March 31	Modules 9 and 10: Other Reports and Other Professional Services	Jeanne Yamamura

AUD Track 2



Jeanne Yamamura, PhD, CPA, MIM

Wednesdays, May 26 — June 30

All classes run from 8-10 pm ET (5-7 pm PT)

Wednesday, May 26	Introduction to the AUD Section	Jeanne Yamamura
Wednesday, June 2	Modules 1 and 2: Professional Ethics – Parts 1 and 2	Jeanne Yamamura
Wednesday, June 9	Modules 3 and 4: Planning and Internal Control	Jeanne Yamamura
Wednesday, June 16	Module 5 and 6: Substantive Evidence Collection	Jeanne Yamamura
Wednesday, June 23	Modules 7 and 8: Sampling and IT Auditing and Reporting	Jeanne Yamamura
Wednesday, June 30	Modules 9 and 10: Other Reports and Other Professional Services	Jeanne Yamamura

AUD Track 3



Jeanne Yamamura, PhD, CPA, MIM

Wednesdays, August 25 — September 29

All classes run from 8-10 pm ET (5-7 pm PT)

Wednesday, August 25	Introduction to the AUD Section	Jeanne Yamamura
Wednesday, September 1	Modules 1 and 2: Professional Ethics – Parts 1 and 2	Jeanne Yamamura
Wednesday, September 8	Modules 3 and 4: Planning and Internal Control	Jeanne Yamamura
Wednesday, September 15	Module 5 and 6: Substantive Evidence Collection	Jeanne Yamamura
Wednesday, September 22	Modules 7 and 8: Sampling and IT Auditing and Reporting	Jeanne Yamamura
Wednesday, September 29	Modules 9 and 10: Other Reports and Other Professional Services	Jeanne Yamamura

AUD Track 4



Jeanne Yamamura, PhD, CPA, MIM

November 3 — December 15

All classes run from 8-10 pm ET (5-7 pm PT)

Wednesday, November 3	Introduction to the AUD Section	Jeanne Yamamura
Wednesday, November 10	Modules 1 and 2: Professional Ethics – Parts 1 and 2	Jeanne Yamamura
Wednesday, November 17	Modules 3 and 4: Planning and Internal Control	Jeanne Yamamura
Wednesday, December 1	Module 5 and 6: Substantive Evidence Collection	Jeanne Yamamura
Wednesday, December 8	Modules 7 and 8: Sampling and IT Auditing and Reporting	Jeanne Yamamura
Wednesday, December 15	Modules 9 and 10: Other Reports and Other Professional Services	Jeanne Yamamura

BEC Track 1



Daniel Gibbons,
MS, MAS, CPA



Janet Gillespie,
CPA

Mondays, February 22 — March 29

All classes run from 8-10 pm ET (5-7 pm PT)

Monday, February 22	Introduction to the BEC Section and Module 1	Janet Gillespie and Dan Gibbons
Monday, March 1	Module 1 Review and Modules 2-4 Introduction	Janet Gillespie and Dan Gibbons
Monday, March 8	Modules 2-4 Review and Modules 5-6 Introduction	Dan Gibbons
Monday, March 15	Modules 5-6 Review and Modules 7-8 Introduction	Janet Gillespie and Dan Gibbons
Monday, March 22	Modules 7-8 Review and Modules 9-10 Introduction	Janet Gillespie
Monday, March 29	Modules 9-10 Review	Janet Gillespie

BEC Track 2



Daniel Gibbons,
MS, MAS, CPA



Janet Gillespie,
CPA

May 24 — June 28

All classes run from 8-10 pm ET (5-7 pm PT)

Monday, May 24	Introduction to the BEC Section and Module 1	Janet Gillespie and Dan Gibbons
Tuesday, June 1	Module 1 Review and Modules 2-4 Introduction	Janet Gillespie and Dan Gibbons
Monday, June 7	Modules 2-4 Review and Modules 5-6 Introduction	Dan Gibbons
Monday, June 14	Modules 5-6 Review and Modules 7-8 Introduction	Janet Gillespie and Dan Gibbons
Monday, June 21	Modules 7-8 Review and Modules 9-10 Introduction	Janet Gillespie
Monday, June 28	Modules 9-10 Review	Janet Gillespie

BEC Track 3



Daniel Gibbons,
MS, MAS, CPA



Janet Gillespie,
CPA

September 13 — October 18

All classes run from 8-10 pm ET (5-7 pm PT)

Monday, September 13	Introduction to the BEC Section and Module 1	Janet Gillespie and Dan Gibbons
Monday, September 20	Module 1 Review and Modules 2-4 Introduction	Janet Gillespie and Dan Gibbons
Monday, September 27	Modules 2-4 Review and Modules 5-6 Introduction	Dan Gibbons
Monday, October 4	Modules 5-6 Review and Modules 7-8 Introduction	Janet Gillespie and Dan Gibbons
Monday, October 11	Modules 7-8 Review and Modules 9-10 Introduction	Janet Gillespie
Monday, October 18	Modules 9-10 Review	Janet Gillespie

BEC Track 4



Daniel Gibbons,
MS, MAS, CPA



Janet Gillespie,
CPA

Mondays, November 8 — December 13

All classes run from 8-10 pm ET (5-7 pm PT)

Monday, November 8	Introduction to the BEC Section and Module 1	Janet Gillespie and Dan Gibbons
Monday, November 15	Module 1 Review and Modules 2-4 Introduction	Janet Gillespie and Dan Gibbons
Monday, November 22	Modules 2-4 Review and Modules 5-6 Introduction	Dan Gibbons
Monday, November 29	Modules 5-6 Review and Modules 7-8 Introduction	Janet Gillespie and Dan Gibbons
Monday, December 6	Modules 7-8 Review and Modules 9-10 Introduction	Janet Gillespie
Monday, December 13	Modules 9-10 Review	Janet Gillespie

FAR Track 1



Meghann Cefaratti,
PhD



Janet Gillespie,
CPA

January 19 — March 30

All classes run from 8-10 pm ET (5-7 pm PT)

Tuesday, January 19	Introduction to the FAR Exam and Module 1	Meghann Cefaratti
Tuesday, January 26	Module 1 Review and Introduction to Module 2	Meghann Cefaratti
Tuesday, February 2	Module 2 Review and Introduction to Module 3	Meghann Cefaratti
Tuesday, February 9	Module 3 Review and Introduction to Module 4	Meghann Cefaratti
Tuesday, February 16	Module 4 Review and Introduction to Module 5	Meghann Cefaratti
Tuesday, February 23	Module 5 Review and Introduction to Module 6	Meghann Cefaratti
Tuesday, March 2	Module 6 Review and Introduction to Module 7	Meghann Cefaratti
Tuesday, March 9	Module 7 Review and Introduction to Module 8	Meghann Cefaratti
Tuesday, March 16	Module 8 Review and Introduction to Module 9	Meghann Cefaratti
Tuesday, March 23	Module 9 Review and Introduction to Module 10	Meghann Cefaratti & Janet Gillespie
Tuesday, March 30	Module 10 Review	Janet Gillespie

FAR Track 2



Meghann Cefaratti,
PhD



Janet Gillespie,
CPA

Tuesdays, April 13 — June 22

All classes run from 8-10 pm ET (5-7 pm PT)

Tuesday, April 13	Introduction to the FAR Exam and Module 1	Meghann Cefaratti
Tuesday, April 20	Module 1 Review and Introduction to Module 2	Meghann Cefaratti
Tuesday, April 27	Module 2 Review and Introduction to Module 3	Meghann Cefaratti
Tuesday, May 4	Module 3 Review and Introduction to Module 4	Meghann Cefaratti
Tuesday, May 11	Module 4 Review and Introduction to Module 5	Meghann Cefaratti
Tuesday, May 18	Module 5 Review and Introduction to Module 6	Meghann Cefaratti
Tuesday, May 25	Module 6 Review and Introduction to Module 7	Meghann Cefaratti
Tuesday, June 1	Module 7 Review and Introduction to Module 8	Meghann Cefaratti
Tuesday, June 8	Module 8 Review and Introduction to Module 9	Meghann Cefaratti
Tuesday, June 15	Module 9 Review and Introduction to Module 10	Meghann Cefaratti & Janet Gillespie
Tuesday, June 22	Module 10 Review	Janet Gillespie

FAR Track 3



Meghann Cefaratti,
PhD



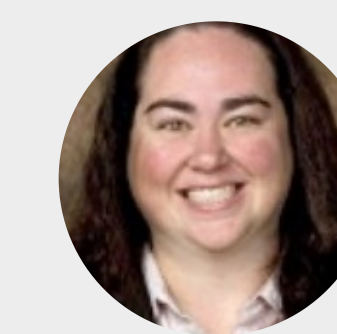
Janet Gillespie,
CPA

Tuesdays, July 20 — September 28

All classes run from 8-10 pm ET (5-7 pm PT)

Tuesday, July 20	Introduction to the FAR Exam and Module 1	Meghann Cefaratti
Tuesday, July 27	Module 1 Review and Introduction to Module 2	Meghann Cefaratti
Tuesday, August 3	Module 2 Review and Introduction to Module 3	Meghann Cefaratti
Tuesday, August 10	Module 3 Review and Introduction to Module 4	Meghann Cefaratti
Tuesday, August 17	Module 4 Review and Introduction to Module 5	Meghann Cefaratti
Tuesday, August 24	Module 5 Review and Introduction to Module 6	Meghann Cefaratti
Tuesday, August 31	Module 6 Review and Introduction to Module 7	Meghann Cefaratti
Tuesday, September 7	Module 7 Review and Introduction to Module 8	Meghann Cefaratti
Tuesday, September 14	Module 8 Review and Introduction to Module 9	Meghann Cefaratti
Tuesday, September 21	Module 9 Review and Introduction to Module 10	Meghann Cefaratti & Janet Gillespie
Tuesday, September 28	Module 10 Review	Janet Gillespie

FAR Track 4



Meghann Cefaratti,
PhD



Janet Gillespie,
CPA

Tuesdays, October 12 — December 21

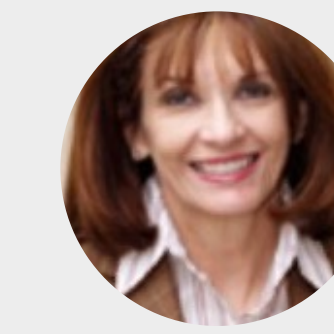
All classes run from 8-10 pm ET (5-7 pm PT)

Tuesday, October 12	Introduction to the FAR Exam and Module 1	Meghann Cefaratti
Tuesday, October 19	Module 1 Review and Introduction to Module 2	Meghann Cefaratti
Tuesday, October 26	Module 2 Review and Introduction to Module 3	Meghann Cefaratti
Tuesday, November 2	Module 3 Review and Introduction to Module 4	Meghann Cefaratti
Tuesday, November 9	Module 4 Review and Introduction to Module 5	Meghann Cefaratti
Tuesday, November 16	Module 5 Review and Introduction to Module 6	Meghann Cefaratti
Tuesday, November 23	Module 6 Review and Introduction to Module 7	Meghann Cefaratti
Tuesday, November 30	Module 7 Review and Introduction to Module 8	Meghann Cefaratti
Tuesday, December 7	Module 8 Review and Introduction to Module 9	Meghann Cefaratti
Tuesday, December 14	Module 9 Review and Introduction to Module 10	Meghann Cefaratti & Janet Gillespie
Tuesday, December 21	Module 10 Review	Janet Gillespie

REG Track 1



Suzanne Youngberg,
MST, CPA



Marianne Jennings,
JD

Thursdays, January 38 — April 1

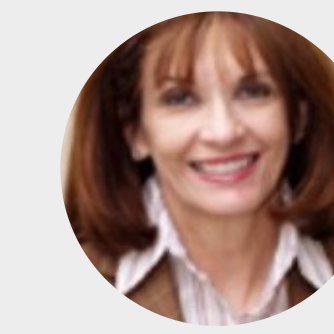
All classes run from 8-10 pm ET (5-7 pm PT)

Thursday, January 28	Introduction to the Regulation Exam and Module 1	Suzanne Youngberg
Thursday, February 4	Module 2	Marianne Jennings
Thursday, February 11	Module 3	Marianne Jennings
Thursday, February 18	Module 4	Marianne Jennings
Thursday, February 25	Module 5 & 6	Suzanne Youngberg
Thursday, March 4	Module 7	Suzanne Youngberg
Thursday, March 11	Module 8	Suzanne Youngberg
Thursday, March 18	Module 9	Suzanne Youngberg
Thursday, March 25	Module 10	Suzanne Youngberg
Thursday, April 1	Conclusion	Suzanne Youngberg

REG Track 2



Suzanne Youngberg,
MST, CPA



Marianne Jennings,
JD

April 29— July 1

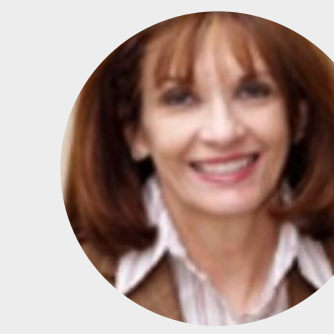
All classes run from 8-10 pm ET (5-7 pm PT)

Thursday, April 29	Introduction to the Regulation Exam and Module 1	Suzanne Youngberg
Thursday, May 6	Module 2	Marianne Jennings
Thursday, May 13	Module 3	Marianne Jennings
Thursday, May 20	Module 4	Marianne Jennings
Thursday, May 27	Module 5 & 6	Suzanne Youngberg
Thursday, June 3	Module 7	Suzanne Youngberg
Thursday, June 10	Module 8	Suzanne Youngberg
Thursday, June 17	Module 9	Suzanne Youngberg
Thursday, June 24	Module 10	Suzanne Youngberg
Thursday, July 1	Conclusion	Suzanne Youngberg

REG Track 3



Suzanne Youngberg,
MST, CPA



Marianne Jennings,
JD

Thursdays, July 29 — September 30

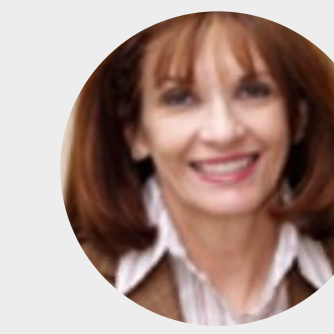
All classes run from 8-10 pm ET (5-7 pm PT)

Thursday, July 29	Introduction to the Regulation Exam and Module 1	Suzanne Youngberg
Thursday, August 5	Module 2	Marianne Jennings
Thursday, August 12	Module 3	Marianne Jennings
Thursday, August 19	Module 4	Marianne Jennings
Thursday, August 26	Module 5 & 6	Suzanne Youngberg
Thursday, September 2	Module 7	Suzanne Youngberg
Thursday, September 9	Module 8	Suzanne Youngberg
Thursday, September 16	Module 9	Suzanne Youngberg
Thursday, September 23	Module 10	Suzanne Youngberg
Thursday, September 30	Conclusion	Suzanne Youngberg

REG Track 4



Suzanne Youngberg,
MST, CPA



Marianne Jennings,
JD

October 21 — January 6, 2022

All classes run from 8-10 pm ET (5-7 pm PT)

Thursday, October 21	Introduction to the Regulation Exam and Module 1	Suzanne Youngberg
Thursday, October 28	Module 2	Marianne Jennings
Thursday, November 4	Module 3	Marianne Jennings
Thursday, November 11	Module 4	Marianne Jennings
Thursday, November 18	Module 5 & 6	Suzanne Youngberg
Wednesday, November 24	Module 7	Suzanne Youngberg
Thursday, December 2	Module 8	Suzanne Youngberg
Thursday, December 9	Module 9	Suzanne Youngberg
Thursday, December 16	Module 10	Suzanne Youngberg
Thursday, January 6, 2022	Conclusion	Suzanne Youngberg

January 2021

SUNDAY	MONDAY	TUESDAY	WEDNESDAY	THURSDAY	FRIDAY	SATURDAY
					1	2
3	4	5	6	7	8	9
10	11	12	13	14	15	16
17	18	FAR	20	21	22	23
24	25	FAR	27	REG	29	1

February 2021

SUNDAY	MONDAY	TUESDAY	WEDNESDAY	THURSDAY	FRIDAY	SATURDAY
		FAR		REG		
	1	2	3	4	5	6
		FAR		REG		
7	8	9	10	11	12	13
		FAR		REG		
14	15	16	17	18	19	20
	BEC	FAR	AUD	REG		
21	22	23	24	25	26	27
28						

March 2021

SUNDAY	MONDAY	TUESDAY	WEDNESDAY	THURSDAY	FRIDAY	SATURDAY
	BEC	FAR	AUD	REG		
	1	2	3	4	5	6
	BEC	FAR	AUD	REG		
7	8	9	10	11	12	13
	BEC	FAR	AUD	REG		
14	15	16	17	18	19	20
	BEC	FAR	AUD	REG		
21	22	23	24	25	26	27
	BEC	FAR	AUD			
28	29	30	31			

April 2021

SUNDAY	MONDAY	TUESDAY	WEDNESDAY	THURSDAY	FRIDAY	SATURDAY
				REG		
				1	2	3
4	5	6	7	8	9	10
		FAR	AUD			
11	12	13	14	15	16	17
		FAR				
18	19	20	21	22	23	24
		FAR				
25	26	27	28	29	30	31

May 2021

SUNDAY	MONDAY	TUESDAY	WEDNESDAY	THURSDAY	FRIDAY	SATURDAY
						1
2	3	FAR	4	5	REG	6
7	8		9	10		11
12	13	FAR	14	15	REG	16
17	18		19	20		21
22	23	FAR	24	25	REG	26
27	28		29	30		31

June 2021

SUNDAY	MONDAY	TUESDAY	WEDNESDAY	THURSDAY	FRIDAY	SATURDAY
	BEC	FAR	AUD	REG		
		1	2	3	4	5
	BEC	FAR	AUD	REG		
6	7	8	9	10	11	12
	BEC	FAR	AUD	REG		
13	14	15	16	17	18	19
	BEC	FAR	AUD	REG		
20	21	22	23	24	25	26
	BEC					
27	28	29	30	31		

July 2021

SUNDAY	MONDAY	TUESDAY	WEDNESDAY	THURSDAY	FRIDAY	SATURDAY
				REG		
				1	2	3
4	5	6	7	8	9	10
11	12	13	14	15	16	17
		FAR				
18	19	20	21	22	23	24
		FAR		REG		
25	26	27	28	29	30	31

August 2021

SUNDAY	MONDAY	TUESDAY	WEDNESDAY	THURSDAY	FRIDAY	SATURDAY
1	2	FAR	4	REG	6	7
8	9	FAR	11	REG	13	14
15	16	FAR	18	REG	20	21
22	23	FAR	AUD	REG	27	28
29	30	FAR				

September 2021

SUNDAY	MONDAY	TUESDAY	WEDNESDAY	THURSDAY	FRIDAY	SATURDAY
			AUD 1	REG 2	3	4
5	6	7	BEC AUD 8	REG 9	10	11
12	BEC 13	14	AUD 15	REG 16	17	18
19	BEC 20	21	AUD 22	REG 23	24	25
26	BEC 27	28	AUD 29	REG 30	31	

October 2021

SUNDAY	MONDAY	TUESDAY	WEDNESDAY	THURSDAY	FRIDAY	SATURDAY
				REG		
					1	2
	BEC					
3	4	5	6	7	8	9
	BEC	FAR				
10	11	12	13	14	15	16
	BEC	FAR				
17	18	19	20	21	22	23
		FAR		REG		
24	25	26	27	28	29	30

November 2021

SUNDAY	MONDAY	TUESDAY	WEDNESDAY	THURSDAY	FRIDAY	SATURDAY
		FAR	AUD	REG		
	1	2	3	4	5	6
	BEC	FAR	AUD	REG		
7	8	9	10	11	12	13
	BEC	FAR	AUD	REG		
14	15	16	17	18	19	20
	BEC	FAR	REG			
21	22	23	24	25	26	27
	BEC	FAR				
28	29	30	31			

December 2021

SUNDAY	MONDAY	TUESDAY	WEDNESDAY	THURSDAY	FRIDAY	SATURDAY
			AUD	REG		
			1	2	3	4
		FAR	AUD	REG		
5	6	7	8	9	10	11
		FAR	AUD	REG		
12	13	14	15	16	17	18
		FAR				
19	20	21	22	23	24	25
		FAR				
26	27	28	29	30	31	

January 2022

SUNDAY	MONDAY	TUESDAY	WEDNESDAY	THURSDAY	FRIDAY	SATURDAY
						1
2	3	4	5	REG	6	7
8	9	10	11	12	13	14
15	16	17	18	19	20	21
22	23	24	25	26	27	28
29						