

All classes run from 8-10 pm ET (5-7 pm PT)

Details on the dates and times of each class are available upon login to your course.

AUD

- Track 1 February 26 — April 1
- Track 2 June 3 — July 8
- Track 3 August 26 — September 30
- Track 4 November 4 — December 16

BEC

- Track 1 February 24 — March 30
- Track 2 May 26 — June 29
- Track 3 August 24 — September 28
- Track 4 November 9 — December 14

FAR

- Track 1 January 22 — March 31
- Track 2 April 14 — June 23
- Track 3 July 21 — September 29
- Track 4 October 13 — December 22

REG

- Track 1 January 30 — April 2
- Track 2 April 30 — July 2
- Track 3 July 30 — October 1
- Track 4 October 22 — January 7, 2021

AUD Track 1



Jeanne Yamamura, PhD, CPA, MIM

Wednesdays, February 26 — April 1, 2020

All classes run from 8-10 pm ET (5-7 pm PT)

Wednesday, February 26	Introduction to the AUD Section	Jeanne Yamamura
Wednesday, March 4	Modules 1 and 2: Professional Ethics – Parts 1 and 2	Jeanne Yamamura
Wednesday, March 11	Modules 3 and 4: Planning and Internal Control	Jeanne Yamamura
Wednesday, March 18	Module 5 and 6: Substantive Evidence Collection	Jeanne Yamamura
Wednesday, March 25	Modules 7 and 8: Sampling and IT Auditing and Reporting	Jeanne Yamamura
Wednesday, April 1	Modules 9 and 10: Other Reports and Other Professional Services	Jeanne Yamamura

AUD Track 2



Jeanne Yamamura, PhD, CPA, MIM

Wednesdays, June 3 — July 8

All classes run from 8-10 pm ET (5-7 pm PT)

Wednesday, June 3	Introduction to the AUD Section	Jeanne Yamamura
Wednesday, June 10	Modules 1 and 2: Professional Ethics – Parts 1 and 2	Jeanne Yamamura
Wednesday, June 17	Modules 3 and 4: Planning and Internal Control	Jeanne Yamamura
Wednesday, June 24	Module 5 and 6: Substantive Evidence Collection	Jeanne Yamamura
Wednesday, July 1	Modules 7 and 8: Sampling and IT Auditing and Reporting	Jeanne Yamamura
Wednesday, July 8	Modules 9 and 10: Other Reports and Other Professional Services	Jeanne Yamamura

AUD Track 3



Jeanne Yamamura, PhD, CPA, MIM

Wednesdays, August 26 — September 30

All classes run from 8-10 pm ET (5-7 pm PT)

Wednesday, August 26	Introduction to the AUD Section	Jeanne Yamamura
Wednesday, September 2	Modules 1 and 2: Professional Ethics – Parts 1 and 2	Jeanne Yamamura
Wednesday, September 9	Modules 3 and 4: Planning and Internal Control	Jeanne Yamamura
Wednesday, September 16	Module 5 and 6: Substantive Evidence Collection	Jeanne Yamamura
Wednesday, September 23	Modules 7 and 8: Sampling and IT Auditing and Reporting	Jeanne Yamamura
Wednesday, September 30	Modules 9 and 10: Other Reports and Other Professional Services	Jeanne Yamamura

AUD Track 4



Jeanne Yamamura, PhD, CPA, MIM

November 4 — December 16

All classes run from 8-10 pm ET (5-7 pm PT)

Wednesday, November 4	Introduction to the AUD Section	Jeanne Yamamura
Wednesday, November 11	Modules 1 and 2: Professional Ethics – Parts 1 and 2	Jeanne Yamamura
Wednesday, November 18	Modules 3 and 4: Planning and Internal Control	Jeanne Yamamura
Wednesday, December 2	Module 5 and 6: Substantive Evidence Collection	Jeanne Yamamura
Wednesday, December 9	Modules 7 and 8: Sampling and IT Auditing and Reporting	Jeanne Yamamura
Wednesday, December 16	Modules 9 and 10: Other Reports and Other Professional Services	Jeanne Yamamura

BEC Track 1



Daniel Gibbons,
MS, MAS, CPA



Janet Gillespie,
CPA

Mondays, February 24 — March 30

All classes run from 8-10 pm ET (5-7 pm PT)

Monday, February 24	Introduction to the BEC Section and Module 1	Janet Gillespie and Dan Gibbons
Monday, March 2	Module 1 Review and Modules 2-4 Introduction	Janet Gillespie and Dan Gibbons
Monday, March 9	Modules 2-4 Review and Modules 5-6 Introduction	Dan Gibbons
Monday, March 16	Modules 5-6 Review and Modules 7-8 Introduction	Janet Gillespie and Dan Gibbons
Monday, March 23	Modules 7-8 Review and Modules 9-10 Introduction	Janet Gillespie
Monday, March 30	Modules 9-10 Review	Janet Gillespie

BEC Track 2



Daniel Gibbons,
MS, MAS, CPA



Janet Gillespie,
CPA

May 26— June 29

All classes run from 8-10 pm ET (5-7 pm PT)

Tuesday, May 26	Introduction to the BEC Section and Module 1	Janet Gillespie and Dan Gibbons
Monday, June 1	Module 1 Review and Modules 2-4 Introduction	Janet Gillespie and Dan Gibbons
Monday, June 8	Modules 2-4 Review and Modules 5-6 Introduction	Dan Gibbons
Monday, June 15	Modules 5-6 Review and Modules 7-8 Introduction	Janet Gillespie and Dan Gibbons
Monday, June 22	Modules 7-8 Review and Modules 9-10 Introduction	Janet Gillespie
Monday, June 29	Modules 9-10 Review	Janet Gillespie

BEC Track 3



Daniel Gibbons,
MS, MAS, CPA



Janet Gillespie,
CPA

August 24 — September 28

All classes run from 8-10 pm ET (5-7 pm PT)

Monday, August 24	Introduction to the BEC Section and Module 1	Janet Gillespie and Dan Gibbons
Monday, August 31	Module 1 Review and Modules 2-4 Introduction	Janet Gillespie and Dan Gibbons
Wednesday, September 9	Modules 2-4 Review and Modules 5-6 Introduction	Dan Gibbons
Monday, September 14	Modules 5-6 Review and Modules 7-8 Introduction	Janet Gillespie and Dan Gibbons
Monday, September 21	Modules 7-8 Review and Modules 9-10 Introduction	Janet Gillespie
Monday, September 28	Modules 9-10 Review	Janet Gillespie

BEC Track 4



Daniel Gibbons,
MS, MAS, CPA



Janet Gillespie,
CPA

Mondays, November 9 — December 14

All classes run from 8-10 pm ET (5-7 pm PT)

Monday, November 9	Introduction to the BEC Section and Module 1	Janet Gillespie and Dan Gibbons
Monday, November 16	Module 1 Review and Modules 2-4 Introduction	Janet Gillespie and Dan Gibbons
Monday, November 23	Modules 2-4 Review and Modules 5-6 Introduction	Dan Gibbons
Monday, November 30	Modules 5-6 Review and Modules 7-8 Introduction	Janet Gillespie and Dan Gibbons
Monday, December 7	Modules 7-8 Review and Modules 9-10 Introduction	Janet Gillespie
Monday, December 14	Modules 9-10 Review	Janet Gillespie

FAR Track 1



Meghann Cefaratti,
PhD



Janet Gillespie,
CPA

January 22 — March 31

All classes run from 8-10 pm ET (5-7 pm PT)

Wednesday, January 22	Introduction to the FAR Exam and Module 1	Meghann Cefaratti
Tuesday, January 28	Module 1 Review and Introduction to Module 2	Meghann Cefaratti
Tuesday, February 4	Module 2 Review and Introduction to Module 3	Meghann Cefaratti
Tuesday, February 11	Module 3 Review and Introduction to Module 4	Meghann Cefaratti
Tuesday, February 18	Module 4 Review and Introduction to Module 5	Meghann Cefaratti
Tuesday, February 25	Module 5 Review and Introduction to Module 6	Meghann Cefaratti
Tuesday, March 3	Module 6 Review and Introduction to Module 7	Meghann Cefaratti
Tuesday, March 10	Module 7 Review and Introduction to Module 8	Meghann Cefaratti
Tuesday, March 17	Module 8 Review and Introduction to Module 9	Meghann Cefaratti
Tuesday, March 24	Module 9 Review and Introduction to Module 10	Meghann Cefaratti & Janet Gillespie
Tuesday, March 31	Module 10 Review	Janet Gillespie

FAR Track 2



Meghann Cefaratti,
PhD



Janet Gillespie,
CPA

Tuesdays, April 14 — June 23

All classes run from 8-10 pm ET (5-7 pm PT)

Tuesday, April 14	Introduction to the FAR Exam and Module 1	Meghann Cefaratti
Tuesday, April 21	Module 1 Review and Introduction to Module 2	Meghann Cefaratti
Tuesday, April 28	Module 2 Review and Introduction to Module 3	Meghann Cefaratti
Tuesday, May 5	Module 3 Review and Introduction to Module 4	Meghann Cefaratti
Tuesday, May 12	Module 4 Review and Introduction to Module 5	Meghann Cefaratti
Tuesday, May 19	Module 5 Review and Introduction to Module 6	Meghann Cefaratti
Tuesday, May 26	Module 6 Review and Introduction to Module 7	Meghann Cefaratti
Tuesday, June 2	Module 7 Review and Introduction to Module 8	Meghann Cefaratti
Tuesday, June 9	Module 8 Review and Introduction to Module 9	Meghann Cefaratti
Tuesday, June 16	Module 9 Review and Introduction to Module 10	Meghann Cefaratti & Janet Gillespie
Tuesday, June 23	Module 10 Review	Janet Gillespie

FAR Track 3



Meghann Cefaratti,
PhD



Janet Gillespie,
CPA

Tuesdays, July 21 — September 29

All classes run from 8-10 pm ET (5-7 pm PT)

Tuesday, July 21	Introduction to the FAR Exam and Module 1	Meghann Cefaratti
Tuesday, July 28	Module 1 Review and Introduction to Module 2	Meghann Cefaratti
Tuesday, August 4	Module 2 Review and Introduction to Module 3	Meghann Cefaratti
Tuesday, August 11	Module 3 Review and Introduction to Module 4	Meghann Cefaratti
Tuesday, August 18	Module 4 Review and Introduction to Module 5	Meghann Cefaratti
Tuesday, August 25	Module 5 Review and Introduction to Module 6	Meghann Cefaratti
Tuesday, September 1	Module 6 Review and Introduction to Module 7	Meghann Cefaratti
Tuesday, September 8	Module 7 Review and Introduction to Module 8	Meghann Cefaratti
Tuesday, September 15	Module 8 Review and Introduction to Module 9	Meghann Cefaratti
Tuesday, September 22	Module 9 Review and Introduction to Module 10	Meghann Cefaratti & Janet Gillespie
Tuesday, September 29	Module 10 Review	Janet Gillespie

FAR Track 4



Meghann Cefaratti,
PhD



Janet Gillespie,
CPA

Tuesdays, October 13 — December 22

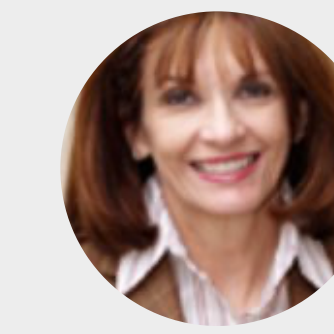
All classes run from 8-10 pm ET (5-7 pm PT)

Tuesday, October 13	Introduction to the FAR Exam and Module 1	Meghann Cefaratti
Tuesday, October 20	Module 1 Review and Introduction to Module 2	Meghann Cefaratti
Tuesday, October 27	Module 2 Review and Introduction to Module 3	Meghann Cefaratti
Tuesday, November 3	Module 3 Review and Introduction to Module 4	Meghann Cefaratti
Tuesday, November 10	Module 4 Review and Introduction to Module 5	Meghann Cefaratti
Tuesday, November 17	Module 5 Review and Introduction to Module 6	Meghann Cefaratti
Tuesday, November 24	Module 6 Review and Introduction to Module 7	Meghann Cefaratti
Tuesday, December 1	Module 7 Review and Introduction to Module 8	Meghann Cefaratti
Tuesday, December 8	Module 8 Review and Introduction to Module 9	Meghann Cefaratti
Tuesday, December 15	Module 9 Review and Introduction to Module 10	Meghann Cefaratti & Janet Gillespie
Tuesday, December 22	Module 10 Review	Janet Gillespie

REG Track 1



Suzanne Youngberg,
MST, CPA



Marianne Jennings,
JD

Thursdays, January 30 — April 2

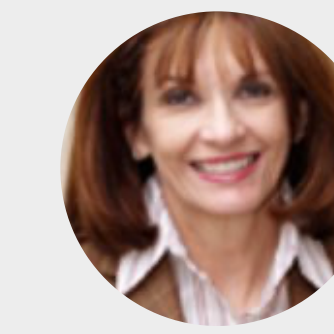
All classes run from 8-10 pm ET (5-7 pm PT)

Thursday, January 30	Introduction to the Regulation Exam and Module 1	Suzanne Youngberg
Thursday, February 6	Module 2	Marianne Jennings
Thursday, February 13	Module 3	Marianne Jennings
Thursday, February 20	Module 4	Marianne Jennings
Thursday, February 27	Module 5 & 6	Suzanne Youngberg
Thursday, March 5	Module 7	Suzanne Youngberg
Thursday, March 12	Module 8	Suzanne Youngberg
Thursday, March 19	Module 9	Suzanne Youngberg
Thursday, March 26	Module 10	Suzanne Youngberg
Thursday, April 2	Conclusion	Suzanne Youngberg

REG Track 2



Suzanne Youngberg,
MST, CPA



Marianne Jennings,
JD

April 30— July 2

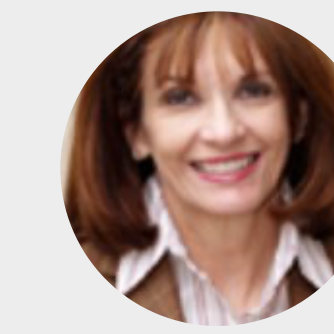
All classes run from 8-10 pm ET (5-7 pm PT)

Thursday, April 30	Introduction to the Regulation Exam and Module 1	Suzanne Youngberg
Thursday, May 7	Module 2	Marianne Jennings
Thursday, May 14	Module 3	Marianne Jennings
Monday, May 18	Module 4	Marianne Jennings
Thursday, May 28	Module 5 & 6	Suzanne Youngberg
Thursday, June 4	Module 7	Suzanne Youngberg
Wednesday, June 10	Module 8	Suzanne Youngberg
Thursday, June 18	Module 9	Suzanne Youngberg
Thursday, June 25	Module 10	Suzanne Youngberg
Thursday, July 2	Conclusion	Suzanne Youngberg

REG Track 3



Suzanne Youngberg,
MST, CPA



Marianne Jennings,
JD

Thursdays, July 30 — October 1

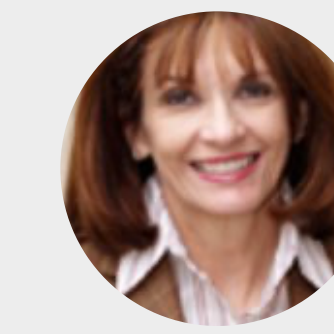
All classes run from 8-10 pm ET (5-7 pm PT)

Thursday, July 30	Introduction to the Regulation Exam and Module 1	Suzanne Youngberg
Thursday, August 6	Module 2	Marianne Jennings
Thursday, August 13	Module 3	Marianne Jennings
Thursday, August 20	Module 4	Marianne Jennings
Thursday, August 27	Module 5 & 6	Suzanne Youngberg
Thursday, September 3	Module 7	Suzanne Youngberg
Thursday, September 10	Module 8	Suzanne Youngberg
Thursday, September 17	Module 9	Suzanne Youngberg
Thursday, September 24	Module 10	Suzanne Youngberg
Thursday, October 1	Conclusion	Suzanne Youngberg

REG Track 4



Suzanne Youngberg,
MST, CPA



Marianne Jennings,
JD

October 22 — January 7, 2021

All classes run from 8-10 pm ET (5-7 pm PT)

Thursday, October 22	Introduction to the Regulation Exam and Module 1	Suzanne Youngberg
Thursday, October 29	Module 2	Marianne Jennings
Wednesday, November 4	Module 3	Marianne Jennings
Thursday, November 12	Module 4	Marianne Jennings
Thursday, November 19	Module 5 & 6	Suzanne Youngberg
Wednesday, November 25	Module 7	Suzanne Youngberg
Thursday, December 3	Module 8	Suzanne Youngberg
Thursday, December 10	Module 9	Suzanne Youngberg
Thursday, December 17	Module 10	Suzanne Youngberg
Thursday, January 7	Conclusion	Suzanne Youngberg

February 2020

SUNDAY	MONDAY	TUESDAY	WEDNESDAY	THURSDAY	FRIDAY	SATURDAY
				REG		1
2	3	FAR	5	REG	7	8
9	10	FAR	12	REG	14	15
16	17	FAR	19	REG	21	22
23	BEC	FAR	AUD	REG	28	29
	24	25	26	27		

March 2020

SUNDAY	MONDAY	TUESDAY	WEDNESDAY	THURSDAY	FRIDAY	SATURDAY
		FAR	AUD	REG		
1	2	3	4	5	6	7
	BEC	FAR	AUD	REG		
8	9	10	11	12	13	14
	BEC	FAR	AUD	REG		
15	16	17	18	19	20	21
	BEC	FAR	AUD	REG		
22	23	24	25	26	27	28
	BEC	FAR				
29	30	31				

April 2020

SUNDAY	MONDAY	TUESDAY	WEDNESDAY	THURSDAY	FRIDAY	SATURDAY
			AUD	REG		
			1	2	3	4
5	6	7	AUD	8	9	10
		FAR	AUD			
12	13	14	15	16	17	18
		FAR				
19	20	21	22	23	24	25
		FAR		REG		
26	27	28	29	30		

May 2020

SUNDAY	MONDAY	TUESDAY	WEDNESDAY	THURSDAY	FRIDAY	SATURDAY
						1 2
3	4	FAR	6	REG	8	9
10	11	FAR	13	REG	15	16
17	REG	FAR	20	21	22	23
24	25	FAR BEC	27	REG	29	30
31						

June 2020

SUNDAY	MONDAY	TUESDAY	WEDNESDAY	THURSDAY	FRIDAY	SATURDAY
	BEC	FAR	AUD	REG		
	1	2	3	4	5	6
	BEC	FAR	AUD	REG		
7	8	9	10	11	12	13
	BEC	FAR	AUD	REG		
14	15	16	17	18	19	20
	BEC	FAR	AUD	REG		
21	22	23	24	25	26	27
	BEC					
28	29	30				

July 2020

SUNDAY	MONDAY	TUESDAY	WEDNESDAY	THURSDAY	FRIDAY	SATURDAY
			AUD			
			1	2	3	4
			AUD			
5	6	7	8	9	10	11
12	13	14	15	16	17	18
		FAR				
19	20	21	22	23	24	25
		FAR				
26	27	28	29	30	31	

August 2020

SUNDAY	MONDAY	TUESDAY	WEDNESDAY	THURSDAY	FRIDAY	SATURDAY
						1
2	3	FAR	4	5	REG	6
		FAR			REG	
9	10		11	12		13
		FAR			REG	
16	17		18	19		20
	BEC	FAR	AUD	REG		
23	24		25	26		27
	BEC					
30	31					

September 2020

SUNDAY	MONDAY	TUESDAY	WEDNESDAY	THURSDAY	FRIDAY	SATURDAY
			AUD	REG		
		1	2	3	4	5
			BEC	REG		
			AUD			
6	7	8	9	10	11	12
	BEC		AUD	REG		
13	14	15	16	17	18	19
	BEC		AUD	REG		
20	21	22	23	24	25	26
	BEC		AUD			
27	28	29	30			

October 2020

SUNDAY	MONDAY	TUESDAY	WEDNESDAY	THURSDAY	FRIDAY	SATURDAY
				REG		
				1	2	3
4	5	6	7	8	9	10
		FAR				
11	12	13	14	15	16	17
		FAR				
18	19	20	21	22	23	24
		FAR		REG		
25	26	27	28	29	30	31

November 2020

SUNDAY	MONDAY	TUESDAY	WEDNESDAY	THURSDAY	FRIDAY	SATURDAY
1	2	FAR	AUD REG	5	6	7
8	BEC	FAR	AUD	REG	13	14
15	BEC	FAR	AUD	REG	20	21
22	BEC	FAR	REG	26	27	28
29	BEC	30	31			

December 2020

SUNDAY	MONDAY	TUESDAY	WEDNESDAY	THURSDAY	FRIDAY	SATURDAY
		FAR	AUD			
		1	2	3	4	5
		FAR	AUD	REG		
6	7	8	9	10	11	12
		FAR	AUD	REG		
13	14	15	16	17	18	19
		FAR				
20	21	22	23	24	25	26
27	28	29	30	31		

January 2021

SUNDAY	MONDAY	TUESDAY	WEDNESDAY	THURSDAY	FRIDAY	SATURDAY
						1 2
3	4	5	6	REG	7	8 9
10	11	12	13	14	15	16
17	18	19	20	21	22	23
24	25	26	27	28	29	30
31						